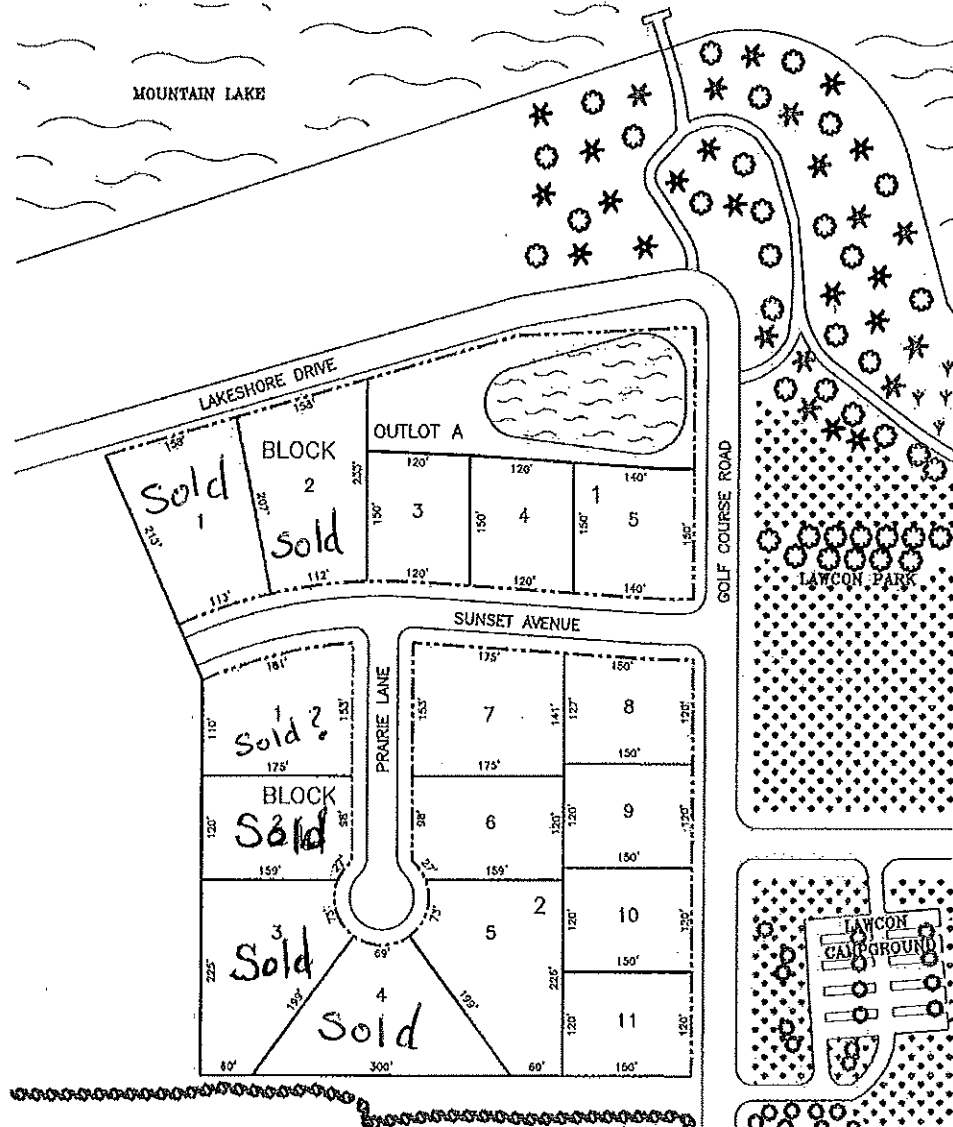


LOTS FOR SALE

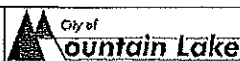


A lake view development courtesy of the Mountain Lake Economic Development Authority. Lakeview Estates features large lots ranging in size from 0.4 acres to nearly 0.7 acres and is located within easy access to camping, city park and playground facilities, Mountain Lake Golf Course, the fishing pier, walking trail and Mountain Lake.

Two schools, a medical center, an excellent public library, low crime rate, employment opportunities and a full service downtown makes Mountain Lake a wonderful community to live in.

Lots are available immediately and are ready for home construction. Buy your lot today by calling or stopping in and seeing Rob Anderson, EDA Director at Mountain Lake City Hall. 507-427-2999 Ext. 4.

BOLTON & MENK, INC.
 Consulting Engineers & Surveyors
 1000 S. FURNACE ST. SUITE 101 W. MOUNTAIN LAKE
 MOUNTAIN LAKE, MN 55120-1001



LAKEVIEW ESTATES FIRST ADDITION

BROUGHT TO YOU BY THE MOUNTAIN LAKE EDA

REFERENCE FINAL PLAT FOR
 EXACT LOT DIMENSIONS